

# TMF Series

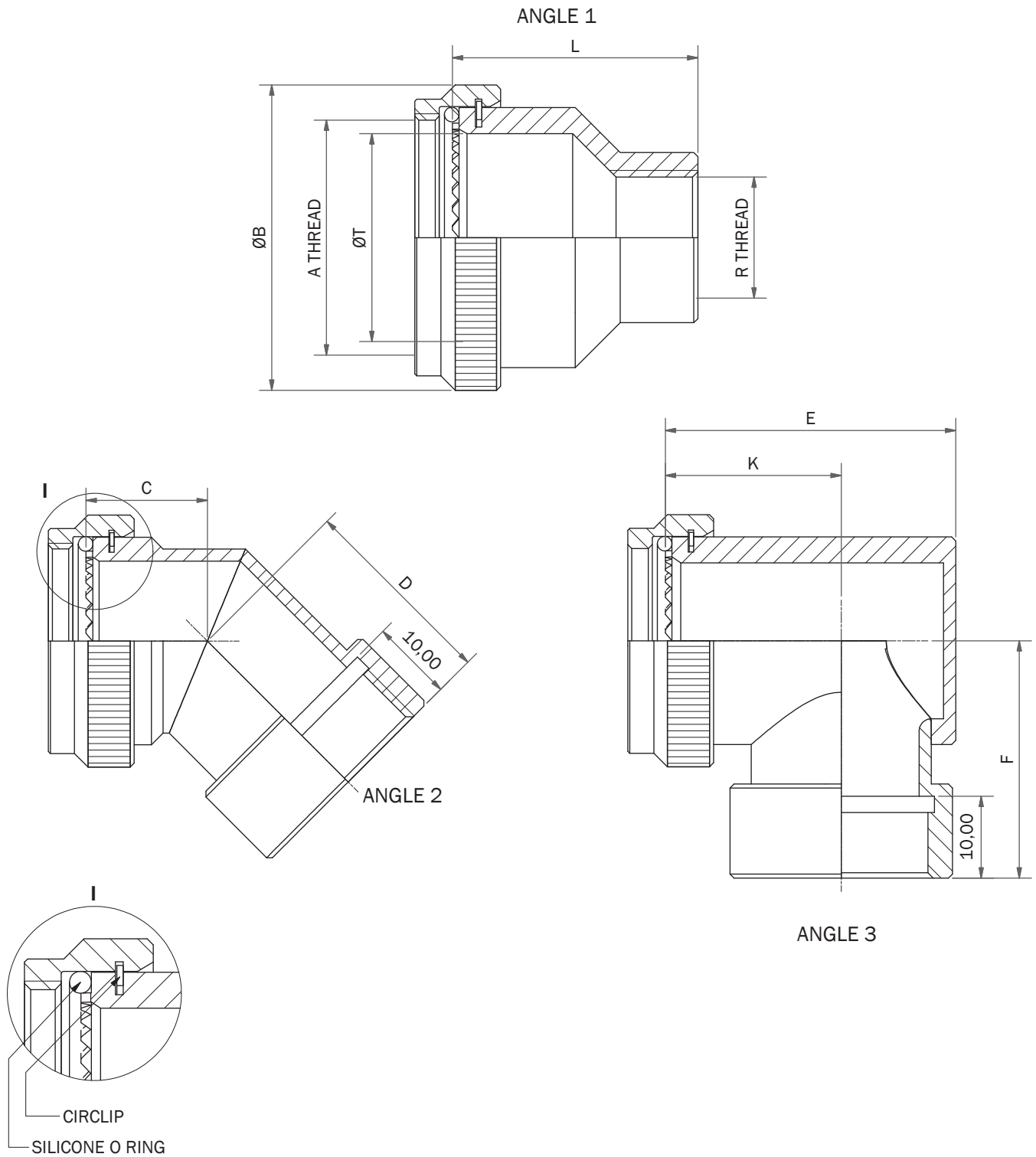
## Metric Thread Adaptor (Female Thread)

Interface F

To fit typical connector: MIL-DTL-38999 SERIES II



Interconnect Solutions Worldwide



DIMENSIONS AND O RING MATERIAL APPLY FOR ALUMINIUM ONLY. FOR OTHER MATERIALS CONSULT FACTORY  
PART NUMBER AND BATCH CODE WILL BE MARKED ON THE ASSEMBLY UNLESS OTHERWISE SPECIFIED

Tel: +44 (0)845 017 1545

DRAWING NOT TO SCALE  
DIMENSIONS IN MM

THIS DRAWING IS THE PROPERTY OF POLAMCO LTD AND MUST NOT BE USED FOR COMMERCIAL PURPOSES WITHOUT WRITTEN CONSENT OF THE COMPANY

# TMF Series

## Metric Thread Adaptor (Female Thread)

Interface F

To fit typical connector: MIL-DTL-38999 SERIES II



**Interconnect Solutions Worldwide**

EXAMPLE PART NUMBER: TMFF1-16-16-1-C-L30	
TMF=	POLAMCO SERIES
F=	CONNECTOR INTERFACE (MIL-DTL-38999 SERIES II)
1=	ANGLE - 1 = STRAIGHT 2 = 45° 3 = 90°
16=	SHELL SIZE (SEE TABLE 1)
16=	REAR THREAD SIZE (SEE TABLE 2)
1=	MATERIAL (ALUMINIUM ALLOY)
C=	PLATING: <a href="#">CLICK TO SEE OPTIONS</a>
L30=	LENGTH CODE IN MM (STRAIGHT ONLY) (5MM INCREMENTS, L25 MIN)

TABLE 1								
SHELL SIZE	A THREAD	B MAX	C MAX	D MAX	E MAX	F +/-0,4	K +/- 0,5	T MIN
08	7/16-28 UNEF	18,3	12,5	22,0	22,7	21,5	15,0	6,6
10	9/16-24 UNEF	21,5	13,0	22,5	26,2	23,0	17,0	10,1
12	11/16-24 UNEF	24,5	13,6	23,0	29,2	25,0	18,0	12,9
14	13/16-20 UNEF	27,8	14,0	23,5	32,2	27,0	20,0	16,1
16	15/16-20 UNEF	30,8	15,0	24,5	35,7	29,0	21,5	19,3
18	1 1/16-18 UNEF	34,1	16,0	25,5	39,7	30,5	23,0	21,7
20	1 3/16-18 UNEF	37,3	16,6	26,0	42,2	31,0	25,0	24,9
22	1 5/16-18 UNEF	40,5	17,0	26,5	45,2	32,5	26,0	28,1
24	1 7/16-18 UNEF	43,7	17,4	27,0	48,2	34,5	28,0	31,3

TABLE 2	
REAR THREAD SIZE	R THREAD
16	M16 x 1.5
20	M20 x 1.5
22	M22 x 1.5
25	M25 x 1.5
32	M32 x 1.5
40	M40 x 1.5

[www.polamco.com](http://www.polamco.com)