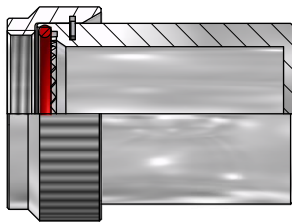


BCSM1-16-1-C(-L20)
NO ATTACHMENT VERSION



NOTE 1 - ATTACHMENT TYPE
 00 - NO EYELET OR RING
 01-05 - EYELET REF. (SEE TABLE 2)
 08-24 / A08-A24 - RING REF. (SEE TABLE 3)
 CF - SUPPLIED WITH CRIMP FERRULE

NOTE 2 - LENGTH DEVIATION
 LENGTH DEVIATION AVAILABLE WHERE L IS A MULTIPLE OF 5,0MM

EXAMPLE PART NUMBER: BCSM1-16-1-C(-L20)-WR4-A16	
BC =	BLANKING COVER SERIES
SM =	CONNECTOR INTERFACE (VG96912)
1 =	ANGLE - 1 = STRAIGHT
16 =	SHELL SIZE (TABLE 1)
1 =	MATERIAL
C =	PLATING
(-L20) =	LENGTH OPTION (SEE NOTE 2) (OMIT FOR STANDARD LENGTH)
WR =	LANYARD TYPE (TABLE 4)
4 =	LANYARD LENGTH (IN INCHES)
A16 =	ATTACHMENT REF: (SEE NOTE 1)

SHELL SIZE	A THREAD CLASS 2B	B MAX	L STANDARD
08	7/16-28 UNEF	18,0	22,5
10	9/16-24 UNEF	21,0	26,0
12	11/16-24 UNEF	24,5	29,0
14	13/16-20 UNEF	27,8	32,0
16	15/16-20 UNEF	30,8	35,5
18	1 1/16-18 UNEF	34,1	39,5
20	1 3/16-18 UNEF	38,0	42,0
22	1 5/16-18 UNEF	41,0	45,0
24	1 7/16-18 UNEF	43,7	48,0

EYELET REF.	F
01	3,2
02	3,7
03	4,3
04	5,3
05	6,4

TO FIT JAM-NUT THREAD		TO FIT ACCESSORY THREAD	
RING REF.	E MAX	RING REF.	E MAX
08	15,1	A08	11,9
10	18,0	A10	15,1
12	22,6	A12	18,0
14	25,8	A14	21,4
16	28,8	A16	24,6
18	32,0	A18	27,8
20	35,0	A20	30,6
22	38,3	A22	34,1
24	41,7	A24	36,9

CODE	LANYARD TYPE
WR	NYLON COVERED STAINLESS STEEL WIRE ROPE
TC	TEFLON COVERED STAINLESS STEEL WIRE ROPE
LC	STAINLESS STEEL LINK CHAIN
R	OLIVE DRAB POLYESTER CORD

DRAWN K.SHEPPARD	DATE 13/04/2010	3RD ANGLE PROJECTION NOT TO SCALE	WESTON LOCK LOWER BRISTOL ROAD BATH BA2 1EP	PAGE 1 OF 2	UNLESS OTHERWISE SPECIFIED ALL DIMENSIONS IN MILLIMETRES
SALES APPR					MATERIAL
DESIGN APPR		THIS DRAWING IS COPYRIGHT AND THE PROPERTY OF POLAMCO LTD IT MUST NOT BE COPIED, USED FOR MANUFACTURE OR OTHERWISE DISCLOSED WITHOUT PRIOR WRITTEN CONSENT OF THE COMPANY.	ASSY USED ON: VG96912 TITLE: BLANKING COVER PART NUMBER: BCSM1 SERIES		NCAGE CODE U5792
QUAL APPR					
ISSUE 1	DCR				
WEIGHT	GENERAL TOL LINEAR +/-0.1MM ANGULAR +/-1°				