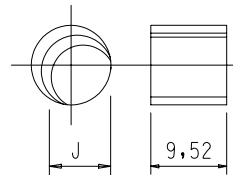


FOR NON-STANDARD THREAD LENGTHS
PLEASE CONTACT SALES OFFICE

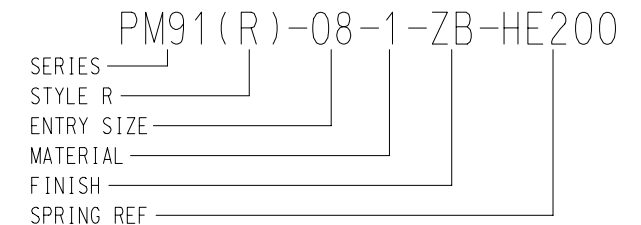
ENTRY SIZE	A THREAD	B MAX	C	D MAX	E	F	SPRING REF
03	M12 x 1,5	20,0	4,77	13,9	30,0	30,9	HE050
04	M12 x 1,5	20,0	6,35	13,9	30,0	31,7	HE050
05	M14 x 1,5	22,0	7,92	15,5	31,0	32,5	HE100
06	M16 x 1,5	24,0	9,52	17,2	33,0	33,3	HE100
07	M17 x 1,5	25,0	11,10	18,7	33,0	34,1	HE100
08	M19 x 1,5	27,0	12,70	20,3	34,0	34,9	HE200
09	M21 x 1,5	29,0	14,27	21,9	35,0	35,7	HE200
10	M22 x 1,5	30,0	15,88	23,5	35,5	36,5	HE200
11	M24 x 1,5	32,0	17,47	25,1	37,5	37,3	HE200
12	M26 x 1,5	34,0	19,05	26,7	37,5	38,1	HE300
13	M27 x 1,5	35,0	20,62	28,3	38,0	38,9	HE300
14	M28 x 1,5	36,0	22,23	29,9	38,0	39,7	HE300
15	M30 x 1,5	38,0	23,82	31,5	40,0	40,5	HE300
16	M32 x 1,5	40,0	25,40	33,1	40,5	41,3	HE300
17	M33 x 1,5	41,0	27,00	34,7	41,5	42,1	HE400
18	M35 x 1,5	43,0	28,60	36,3	42,5	42,9	HE400
19	M36 x 1,5	44,0	30,20	37,9	43,0	43,7	HE400
20	M38 x 1,5	46,0	31,80	39,5	43,5	44,5	HE400
21	M40 x 1,5	48,0	33,38	41,1	44,5	45,2	HE400
22	M41 x 1,5	49,0	35,00	42,7	45,5	46,0	HE400
23	M43 x 1,5	51,0	36,58	44,3	46,0	46,8	HE400
24	M44 x 1,5	52,0	38,10	45,9	46,5	47,6	HE400


SPRING REF	J
HE050	7.34
HE100	9.22
HE200	14.50
HE300	18.50
HE400	25.00



SUPPLIED WITH
2 LOCK NUTS
1 STAINLESS STEEL WASHER
1 SILICONE SEAL

PM91R-08-1-ZB-HE200



PANEL MOUNT SPRING ADAPTOR	SERIES PM91
	THIS DRAWING IS THE COPYRIGHT AND THE PROPERTY OF POLAMCO LTD. IT MUST NOT BE COPIED, USED FOR MANUFACTURE OR OTHERWISE DISCLOSED WITHOUT WRITTEN CONSENT OF THE COMPANY
 POLAMCO LTD	WESTON LOCK LOWER BRISTOL ROAD BATH BA2 1EP