

TABLE 1

SHELL SIZE	A THREAD	B MAX	E MAX	F MAX	T	Z
09	M12 x 1.0	18,0	18,0	30,5	6,8	12,8
11	M15 x 1.0	21,0	21,5	32,2	10,3	14,1
13	M18 x 1.0	24,5	25,0	33,7	13,6	15,8
15	M22 x 1.0	29,0	28,5	35,2	16,3	18,1
17	M25 x 1.0	32,5	31,5	36,9	19,5	19,7
19	M28 x 1.0	35,5	35,0	38,5	21,9	21,5
21	M31 x 1.0	37,0	37,0	40,1	25,2	22,0
23	M34 x 1.0	40,0	40,5	41,6	28,3	24,1
25	M37 x 1.0	43,5	43,5	43,1	31,5	25,8

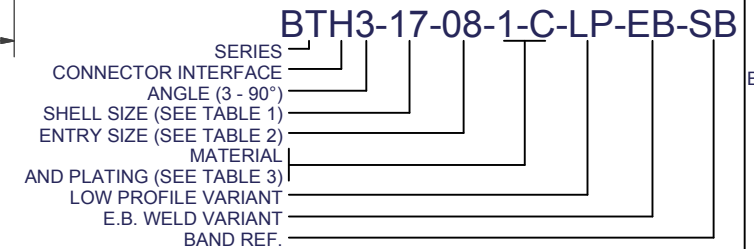
TABLE 2

ENTRY SIZE	G	H MAX
03	4,77	13,9
04	6,35	13,9
05	7,92	15,5
06	9,52	17,2
07	11,10	18,7
08	12,70	20,3
09	14,27	21,9
10	15,88	23,5
11	17,47	25,1
12	19,05	26,7
13	20,62	28,3
14	22,23	29,9
15	23,82	31,5
16	25,40	33,1
17	27,00	34,7
18	28,60	36,3
19	30,20	37,9
20	31,80	39,5
21	33,38	41,1
22	35,00	42,7
23	36,58	44,3
24	38,10	45,9

TABLE 3

CODE	MATERIAL / PLATING
1-C	ALUMINIUM / ELECTROLESS NICKEL
1-B	ALUMINIUM / CADMIUM OLIVE DRAB OVER ELECTROLESS NICKEL
1-ZB	ALUMINIUM / ZINC COBALT OLIVE DRAB OVER ELECTROLESS NICKEL
4-J	STAINLESS STEEL / PASSIVATE
2-Z	NICKEL ALUMINIUM BRONZE / SHOT BLAST

LIST NOT EXHAUSTIVE - FOR COMPREHENSIVE LIST AND SPECS SEE WEBSITE



BAND REF.

- SB - STANDARD BAND (362MM)
- MB - MICRO BAND (207MM)
- LS - LONG (STANDARD WIDTH) BAND (457MM)
- LM - LONG (MICRO WIDTH) BAND (362MM)
- OMIT FOR NO BAND REQUIRED



BTH3 LP EB DATA SHEET BANDING ADAPTOR ASSEMBLY

INTERFACE CODE: H (SHROUDED TOOTH)
TO FIT CONNECTOR:
MIL-DTL-38999 SERIES III & IV

DRAWING NOT TO SCALE - DIMENSIONS IN MM

THIS DRAWING IS THE COPYRIGHT AND THE PROPERTY OF
POLAMCO LTD. IT MUST NOT BE COPIED, USED FOR
MANUFACTURE OR OTHERWISE DISCLOSED WITHOUT
WRITTEN CONSENT OF THE COMPANY

ISSUE
1
DATE
09/03/2007



POLAMCO LTD

WESTON LOCK
LOWER BRISTOL ROAD
BATH BA2 1EP