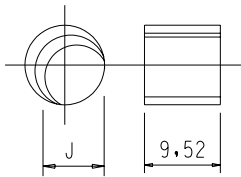
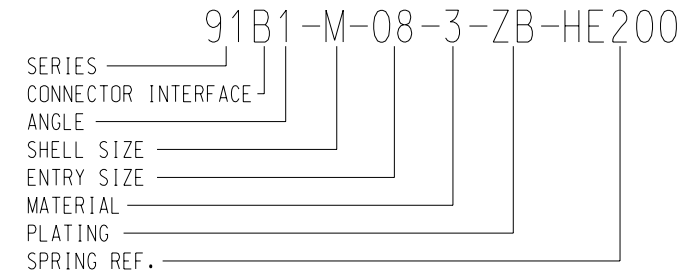


SPRING REF	J
HE050	7.34
HE100	9.22
HE200	14.50
HE300	18.50
HE400	25.00



SHELL SIZE	A THREAD	B MAX	C MAX	D MAX	E MAX	F MAX
S	0.7969 x 26TP1	25.0	15.3	26.3	29.7	32.4
M	1.0156 x 26TP1	32.0	19.3	28.3	34.5	35.1
L	1.4062 x 26TP1	41.0	23.1	35.3	45.0	40.0

ENTRY SIZE	G	H MAX	SPRING REF
03	4.77	13.9	HE050
04	6.35	13.9	HE050
05	7.92	15.5	HE100
06	9.52	17.2	HE100
07	11.10	18.7	HE100
08	12.70	20.3	HE200
09	14.27	21.9	HE200
10	15.88	23.5	HE200
11	17.47	25.1	HE200
12	19.05	26.7	HE300
13	20.62	28.3	HE300
14	22.23	29.9	HE300
15	23.82	31.5	HE300
16	25.40	33.1	HE300
17	27.00	34.7	HE400
18	28.60	36.3	HE400
19	30.20	37.9	HE400
20	31.80	39.5	HE400
21	33.38	41.1	HE400
22	35.00	42.7	HE400
23	36.58	44.3	HE400
24	38.10	45.9	HE400



SPRING ADAPTOR	<b>SERIES 91</b> TO FIT CONNECTOR CODE B
	<small>THIS DRAWING IS THE COPYRIGHT AND THE PROPERTY OF POLAMCO LTD. IT MUST NOT BE COPIED, USED FOR MANUFACTURE OR OTHERWISE DISCLOSED WITHOUT WRITTEN CONSENT OF THE COMPANY</small>
 <b>POLAMCO LTD</b>	WESTON LOCK LOWER BRISTOL ROAD BATH BA2 1EP