

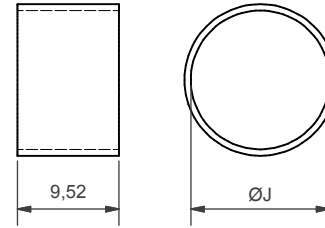
TABLE 1

SHELL SIZE	A THREAD	B MAX	G	H MAX	SPRING REF.
09	M12 x 1.0	18,0	6,8	13,2	HE050
11	M15 x 1.0	21,0	10,3	16,7	HE100
13	M18 x 1.0	24,5	13,6	20,0	HE200
15	M22 x 1.0	29,0	16,3	22,7	HE200
17	M25 x 1.0	32,5	19,5	25,4	HE300
19	M28 x 1.0	35,5	21,9	28,3	HE300
21	M31 x 1.0	37,0	25,2	31,6	HE300
23	M34 x 1.0	40,0	28,3	34,7	HE400
25	M37 x 1.0	43,5	31,5	37,9	HE400

TABLE 4

SPRING REF.	J MIN
HE050	7,34
HE100	9,22
HE200	14,50
HE300	18,50
HE400	25,00

CONSTANT FORCE SPRING



KMAH1-17-1-C-S1-HE

BASIC SERIES
 STYLE
 CONNECTOR INTERFACE
 ANGLE (1 - STRAIGHT)
 SHELL SIZE (TABLE 1)
 MATERIAL (SEE TABLE 2)
 PLATING (SEE TABLE 2)
 SLOT OPTION (TABLE 3)
 TERMINATION OPTION (HE - CONSTANT FORCE SPRING)
 (SB - STANDARD BAND STRAP)
 (OMIT FOR NO TERMINATION STRAP)

TABLE 2

CODE	MATERIAL / PLATING
1-C	ALUMINIUM / ELECTROLESS NICKEL
1-B	ALUMINIUM / CADMIUM OLIVE DRAB OVER ELECTROLESS NICKEL
1-ZB	ALUMINIUM / ZINC COBALT OLIVE DRAB OVER ELECTROLESS NICKEL
4-J	STAINLESS STEEL / PASSIVATE
2-Z	NICKEL ALUMINIUM BRONZE / SHOT BLAST

LIST NOT EXHAUSTIVE - FOR COMPREHENSIVE LIST AND SPECS SEE WEBSITE

TABLE 3

SLOT OPTION	L +/-0,5	M +/-0,2	N +/-0,2	MESH-SOCK PART NUMBER (ORDERED SEPARATELY)
S1	26,5	12,0	19,5	KM(6) - 25 M REEL
S2	34,5	20,0	27,5	KM(13) - 25 M REEL

**KMAH1 DATA SHEET
MESH-SOCK (STYLE A) ADAPTOR**

INTERFACE CODE: H
 TO FIT CONNECTOR:
 MIL-DTL-38999 SERIES III & IV
 MANUFACTURED UNDER LICENCE
 'WESTLANDS HELICOPTERS UK PATENT 2239358'
 DRAWING NOT TO SCALE - DIMENSIONS IN MM

THIS DRAWING IS THE COPYRIGHT AND THE PROPERTY OF POLAMCO LTD. IT MUST NOT BE COPIED, USED FOR MANUFACTURE OR OTHERWISE DISCLOSED WITHOUT WRITTEN CONSENT OF THE COMPANY

ISSUE
 1
 DATE
 18/05/2007



POLAMCO LTD

WESTON LOCK
 LOWER BRISTOL ROAD
 BATH BA2 1EP