

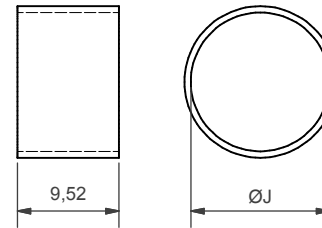
TABLE 1

SHELL SIZE	A THREAD	B MAX	G	H MAX	SPRING REF.
08	1/2-20 UNF	15,6	6,7	13,1	HE050
10	5/8-24 UNEF	18,6	9,4	15,8	HE100
12	3/4-20 UNEF	21,7	12,9	19,3	HE200
14	7/8-20 UNEF	24,9	14,8	21,2	HE200
16	1-20 UNEF	28,2	17,9	24,3	HE300
18	1 1/16-18 UNEF	30,9	19,9	26,3	HE300
20	1 3/16-18 UNEF	34,1	23,1	29,5	HE300
22	1 5/16-18 UNEF	37,3	26,3	32,7	HE400
24	1 7/16-18 UNEF	40,4	29,2	35,6	HE400

TABLE 4

SPRING REF.	J MIN
HE050	7,34
HE100	9,22
HE200	14,50
HE300	18,50
HE400	25,00

CONSTANT FORCE SPRING



**KMAA1-16-1-C-S1-HE**

- BASIC SERIES
- STYLE
- CONNECTOR INTERFACE
- ANGLE (1 - STRAIGHT)
- SHELL SIZE (TABLE 1)
- MATERIAL (SEE TABLE 2)
- PLATING (SEE TABLE 2)
- SLOT OPTION (TABLE 3)
- TERMINATION OPTION (HE - CONSTANT FORCE SPRING)  
(SB - STANDARD BAND STRAP)  
(OMIT FOR NO TERMINATION STRAP)

TABLE 2

CODE	MATERIAL / PLATING
1-C	ALUMINIUM / ELECTROLESS NICKEL
1-B	ALUMINIUM / CADMIUM OLIVE DRAB OVER ELECTROLESS NICKEL
1-ZB	ALUMINIUM / ZINC COBALT OLIVE DRAB OVER ELECTROLESS NICKEL
4-J	STAINLESS STEEL / PASSIVATE
2-Z	NICKEL ALUMINIUM BRONZE / SHOT BLAST

LIST NOT EXHAUSTIVE - FOR COMPREHENSIVE LIST AND SPECS SEE WEBSITE

TABLE 3

SLOT OPTION	L +/-0,5	M +/-0,2	N +/-0,2	MESH-SOCK PART NUMBER (ORDERED SEPARATELY)
S1	28,0	12,0	19,5	KM(6) - 25 M REEL
S2	36,0	20,0	27,5	KM(13) - 25 M REEL

**KMAA1 DATA SHEET  
MESH-SOCK (STYLE A) ADAPTOR**

INTERFACE CODE: A

TO FIT CONNECTOR:  
MIL-C-26482 SERIES II / MIL-C-83723 SERIES III

MANUFACTURED UNDER LICENCE

'WESTLANDS HELICOPTERS UK PATENT 2239358'

DRAWING NOT TO SCALE - DIMENSIONS IN MM

THIS DRAWING IS THE COPYRIGHT AND THE PROPERTY OF  
POLAMCO LTD. IT MUST NOT BE COPIED, USED FOR  
MANUFACTURE OR OTHERWISE DISCLOSED WITHOUT  
WRITTEN CONSENT OF THE COMPANY

ISSUE

1

DATE

18/05/2007



**POLAMCO LTD**

WESTON LOCK  
LOWER BRISTOL ROAD  
BATH BA2 1EP