

JACK POST OPTION

TABLE 1

SHELL SIZE	A	B MAX	C	MAX CIRCULAR ENTRY	MAX ELONGATED ENTRY
09	31,0	13,0	24,99	06	08
15	39,2	13,0	33,32	06	10
25	53,0	13,0	47,04	06	11
37	69,5	13,0	63,50	06	12
50	66,9	16,0	61,11	08	12
104	69,7	17,5	63,50	08	12

TABLE 2

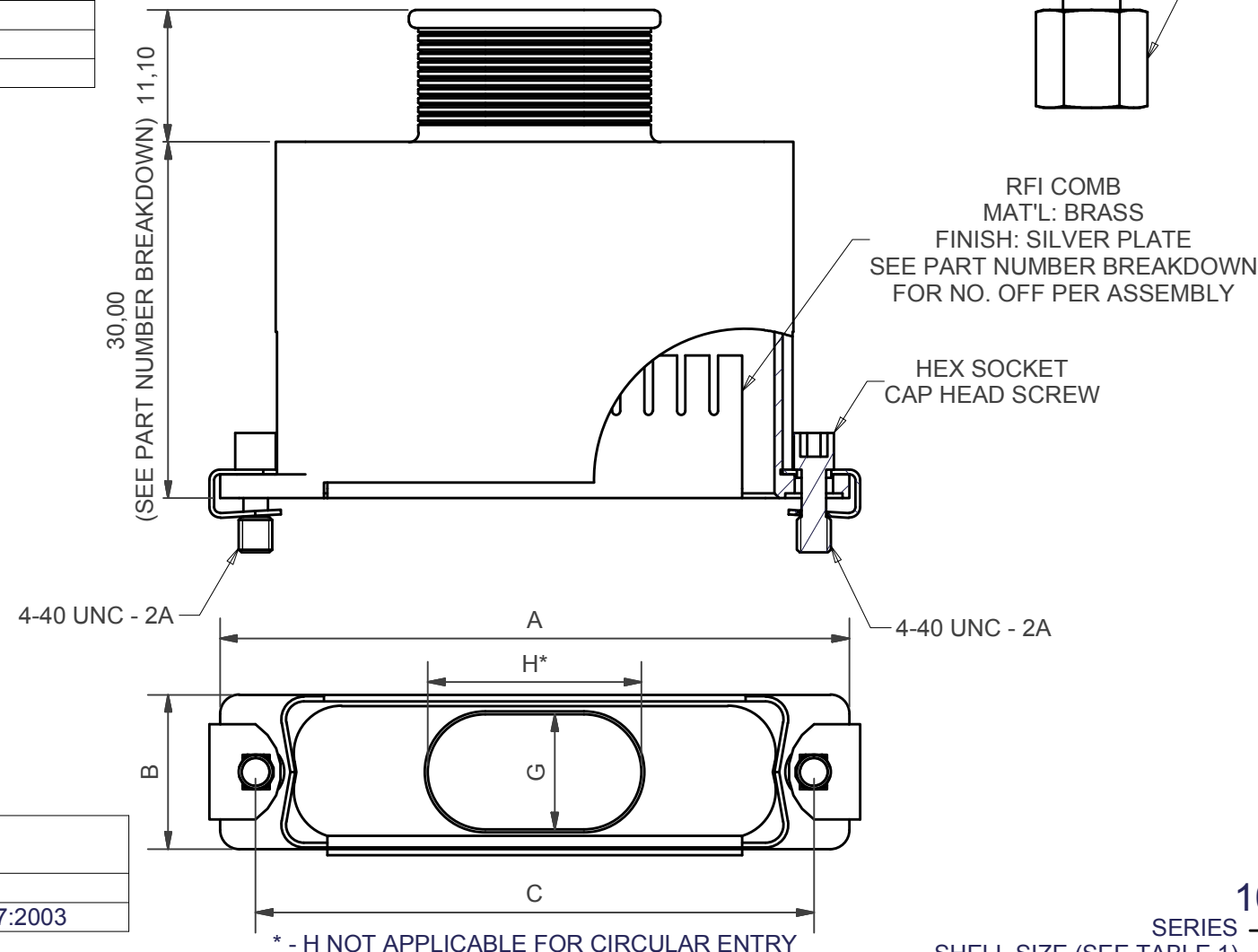
ENTRY SIZE	G DIA	G WIDTH	H
01	3,18	-	
02	4,75	-	
03	6,86	-	
04	7,37	-	
05	7,92	-	
06	10,03	-	
07	10,67	9,7*	11,8*
08	12,70	9,7*	17,9*
09	-	9,7	22,0
10	-	9,7	26,5
11	-	9,7	29,0
12	-	9,7	34,0
13	-	9,7	37,5

* - FOR SHELL SIZES 09, 15, 25 AND 37 ONLY

TABLE 3

PLATING CODE	DESCRIPTION
C	ELECTROLESS NICKEL
CHP	HI PHOSPHOR ELECTROLESS NICKEL TO BS EN ISO 4527:2003

HARDWARE TORQUE VALUE: 5.2lb.in (58,75cNm)



RFI COMB
MAT'L: BRASS
FINISH: SILVER PLATE
SEE PART NUMBER BREAKDOWN
FOR NO. OFF PER ASSEMBLY

HEX SOCKET
CAP HEAD SCREW

JACK POST (4-40UNC FEMALE THREAD)
SECURED BY THREAD LOCK ADHESIVE

NOTES
SPARES:
HARWARE:
100P2627-HKIT (SCREW)
100P2627-FKIT (JACKPOST)

RFI COMB:
100P2627-**COMB;
WHERE ** DENOTES SHELL SIZE

100P2627-25-08-1-CHP-D-JP-L45

SERIES _____
SHELL SIZE (SEE TABLE 1) _____
ENTRY SIZE (SEE TABLE 2) _____
MATERIAL (1 - ALUM ALLOY) _____
FINISH/PLATING (SEE TABLE 3) _____
RFI COMB OPTION (D - DOUBLE COMB ASSEMBLY)
(OMIT FOR 1 OFF COMBS PER ASSEMBLY)
JACK POST OPTION (OMIT FOR JACK SCREW)
BACKSHELL DEPTH IN MM (IN INCREMENTS OF 5MM)
(OMIT FOR STANDARD 30MM - MIN 20,0/MAX 50,0MM)

ISSUE	DCR NO.	DATE	APPROVED	MATERIAL	UNLESS OTHERWISE SPECIFIED ALL DIMENSIONS IN MILLIMETRES TOLERANCE ON DIMENSIONS +/-0.1MM TOLERANCE ON ANGLES +/- 1 DEGREE	DO NOT SCALE THIS DRAWING	POLAMCO LTD WESTON LOCK LOWER BRISTOL ROAD BATH BA2 1EP	PART NO 100P2627 SERIES	
3	2728	25/03/2008	MXF	SEE ABOVE	WEIGHT	THIS DRAWING IS COPYRIGHT, AND THE PROPERTY OF POLAMCO LTD. IT MUST NOT BE COPIED, USED FOR MANUFACTURE OR OTHERWISE DISCLOSED WITHOUT PRIOR WRITTEN CONSENT OF THE COMPANY.	TITLE D-SUB BACKSHELL ASSEMBLY WITH RFI COMB	ASSY USED ON MIL-C-24308	
					DRAWN			DIW	DRAWING NO P9425
				NCAGE CODE: U5792					

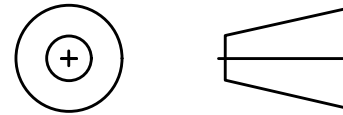


TABLE 1

SHELL SIZE	A	B MAX	C	MAX CIRCULAR ENTRY
09	31,0	13,0	24,99	06
15	39,2	13,0	33,32	06
25	53,0	13,0	47,04	06
37	69,5	13,0	63,50	06
50	66,9	16,0	61,11	08
104	69,7	17,5	63,50	08

TABLE 2

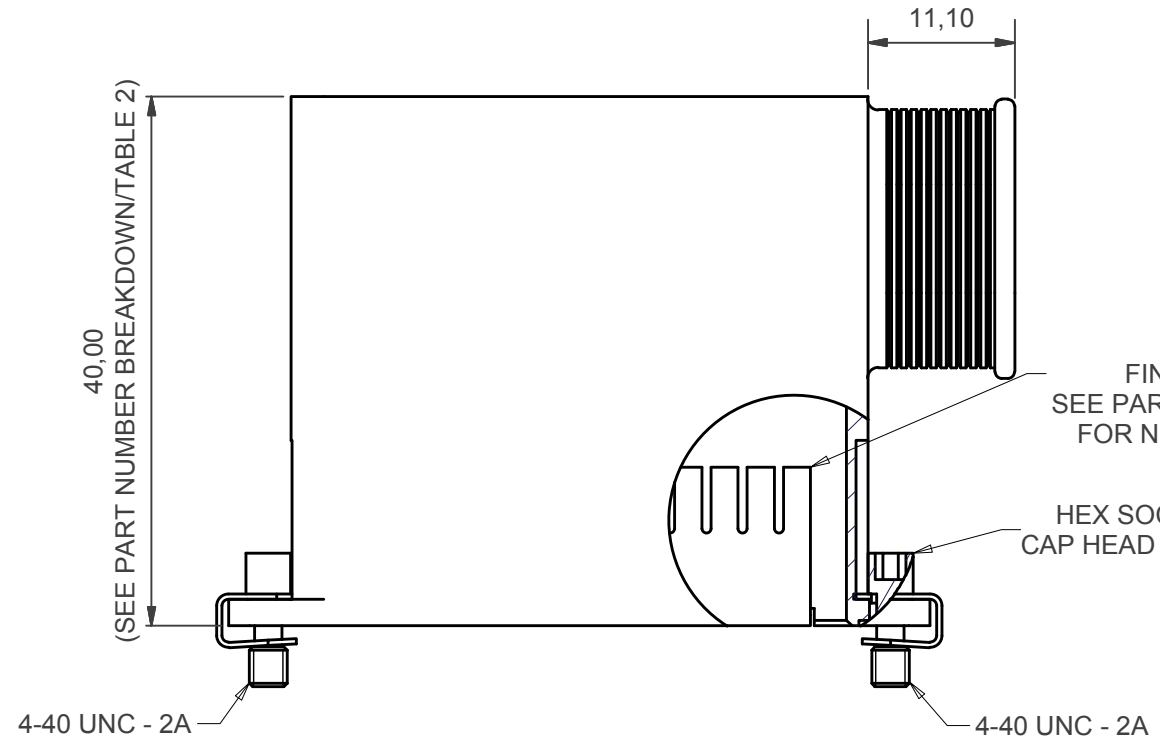
ENTRY SIZE	G DIA	G WIDTH	H	MIN HEIGHT
01	3,18	-		25,0
02	4,75	-		25,0
03	6,86	-		25,0
04	7,37	-		30,0
05	7,92	-		30,0
06	10,03	-		30,0
07	10,67	9,7*	11,8*	30,0
08	12,70	9,7*	17,9*	40,0
09	-	9,7	22,0	40,0
10	-	9,7	26,5	45,0
11	-	9,7	29,0	50,0
12	-	9,7	34,0	55,0
13	-	9,7	37,5	60,0

* - FOR SHELL SIZES 09, 15, 25 AND 37 ONLY

TABLE 3

PLATING CODE	DESCRIPTION
C	ELECTROLESS NICKEL
CHP	HI PHOSPHOR ELECTROLESS NICKEL TO BS EN ISO 4527:2003

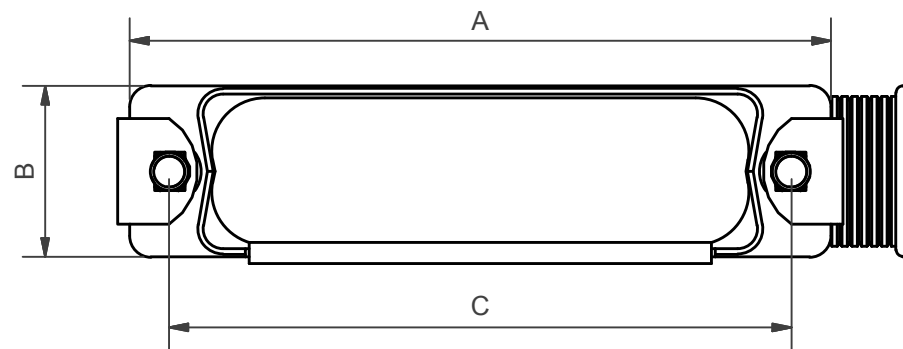
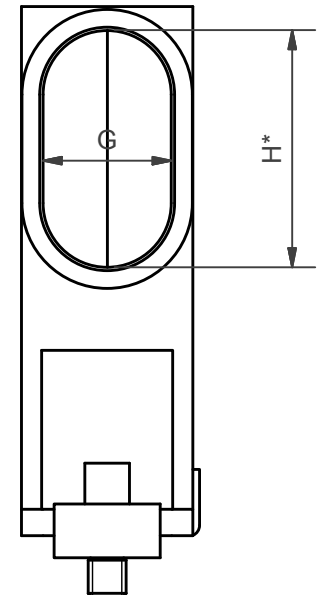
HARDWARE TORQUE VALUE: 5.2lb.in (58,75cNm)



RFI COMB
MAT'L: BRASS
FINISH: SILVER PLATE
SEE PART NUMBER BREAKDOWN
FOR NO. OFF PER ASSEMBLY

HEX SOCKET
CAP HEAD SCREW

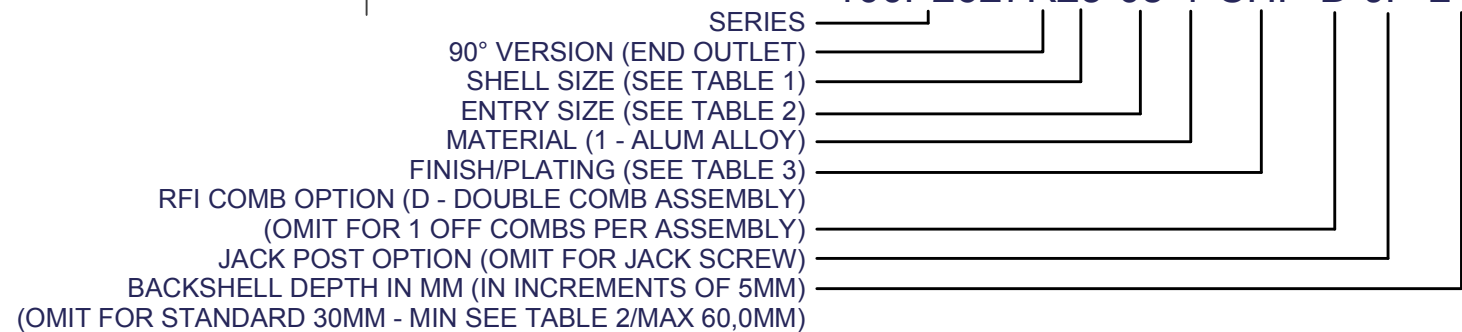
* - H NOT APPLICABLE
FOR CIRCULAR ENTRY



NOTES
SPARES:
HARWARE:
100P2627-HKIT (SCREW)
100P2627-FKIT (JACKPOST)

RFI COMB:
100P2627-**COMB;
WHERE ** DENOTES SHELL SIZE

100P2627R25-08-1-CHP-D-JP-L45



ISSUE	DCR NO.	DATE	APPROVED	MATERIAL	UNLESS OTHERWISE SPECIFIED ALL DIMENSIONS IN MILLIMETRES TOLERANCE ON DIMENSIONS +/-0.1MM TOLERANCE ON ANGLES +/- 1 DEGREE	DO NOT SCALE THIS DRAWING	POLAMCO LTD WESTON LOCK LOWER BRISTOL ROAD BATH BA2 1EP	PART NO 100P2627R SERIES	
3	2728	25/03/2008	MXF	SEE ABOVE	WEIGHT	THIS DRAWING IS COPYRIGHT, AND THE PROPERTY OF POLAMCO LTD. IT MUST NOT BE COPIED, USED FOR MANUFACTURE OR OTHERWISE DISCLOSED WITHOUT PRIOR WRITTEN CONSENT OF THE COMPANY.	TITLE D-SUB BACKSHELL ASSEMBLY WITH RFI COMB	ASSY USED ON MIL-C-24308	
					DRAWN			DIW	DRAWING NO P9425
				NCAGE CODE: U5792					

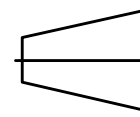
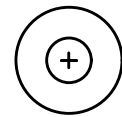


TABLE 1

SHELL SIZE	A	B MAX	C	MAX ENTRY
09	31,0	13,0	24,99	08
15	39,2	13,0	33,32	10
25	53,0	13,0	47,04	12
37	69,5	13,0	63,50	12
50	66,9	16,0	61,11	12
104	69,7	17,5	63,50	12

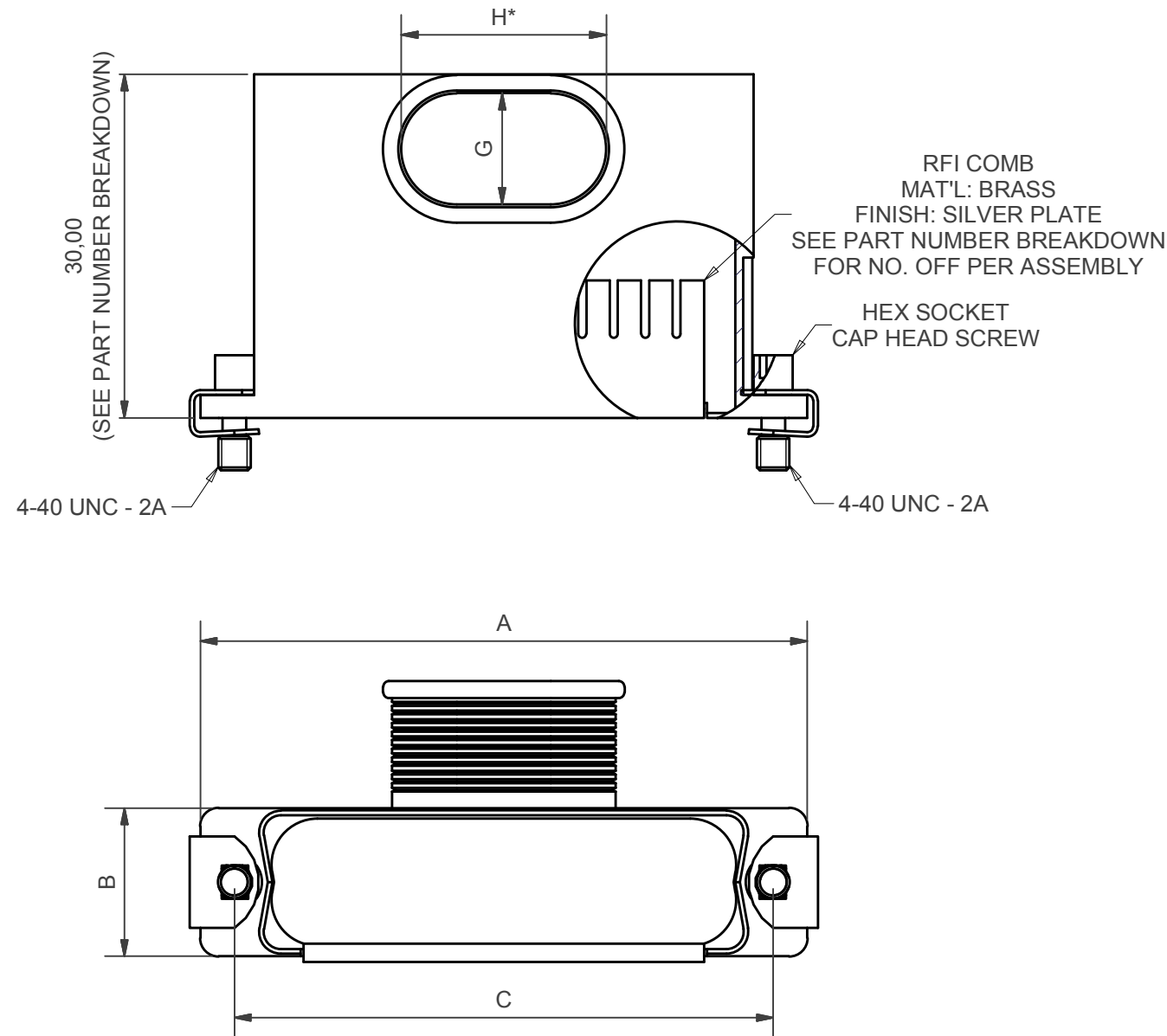
TABLE 2

ENTRY SIZE	G DIA	G WIDTH	H
01	3,18	-	
02	4,75	-	
03	6,86	-	
04	7,37	-	
05	7,92	-	
06	10,03	-	
07	10,67	-	
08	12,70	-	
09	-	9,7	22,0
10	-	9,7	26,5
11	-	9,7	29,0
12	-	9,7	34,0
13	-	9,7	37,5

TABLE 3

PLATING CODE	DESCRIPTION
C	ELECTROLESS NICKEL
CHP	HI PHOSPHOR ELECTROLESS NICKEL TO BS EN ISO 4527:2003

HARDWARE TORQUE VALUE: 5.2lb.in (58,75cNm)



NOTES
SPARES:
HARWARE:
100P2627-HKIT (SCREW)
100P2627-FKIT (JACKPOST)

RFI COMB:
100P2627-**COMB;
WHERE ** DENOTES SHELL SIZE

100P2627N25-08-1-CHP-D-JP-L45

SERIES _____
90° VERSION (SIDE OUTLET) _____
SHELL SIZE (SEE TABLE 1) _____
ENTRY SIZE (SEE TABLE 2) _____
MATERIAL (1 - ALUM ALLOY) _____
FINISH/PLATING (SEE TABLE 3) _____
RFI COMB OPTION (D - DOUBLE COMB ASSEMBLY) _____
(OMIT FOR 1 OFF COMBS PER ASSEMBLY) _____
JACK POST OPTION (OMIT FOR JACK SCREW) _____
BACKSHELL DEPTH IN MM (IN INCREMENTS OF 5MM) _____
(OMIT FOR STANDARD 30MM - MIN 25,0/MAX 60,0MM) _____

ISSUE	DCR NO.	DATE	APPROVED	MATERIAL	UNLESS OTHERWISE SPECIFIED ALL DIMENSIONS IN MILLIMETRES TOLERANCE ON DIMENSIONS +/-0.1MM TOLERANCE ON ANGLES +/- 1 DEGREE	DO NOT SCALE THIS DRAWING	POLAMCO LTD WESTON LOCK LOWER BRISTOL ROAD BATH BA2 1EP	PART NO
3	2728	25/03/2008	MXF	SEE ABOVE	WEIGHT	THIS DRAWING IS COPYRIGHT, AND THE PROPERTY OF POLAMCO LTD. IT MUST NOT BE COPIED, USED FOR MANUFACTURE OR OTHERWISE DISCLOSED WITHOUT PRIOR WRITTEN CONSENT OF THE COMPANY.	TITLE D-SUB BACKSHELL ASSEMBLY WITH RFI COMB	100P2627N SERIES
					ASSY USED ON MIL-C-24308			
					DRAWING NO P9425			
					NCAGE CODE: U5792			

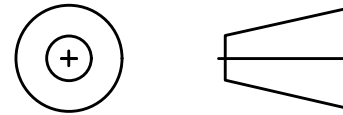


TABLE 1

SHELL SIZE	A	B MAX	C
09	31,0	13,0	24,99
15	39,2	13,0	33,32
25	53,0	13,0	47,04
37	69,5	13,0	63,50
50	66,9	16,0	61,11
104	69,7	17,5	63,50

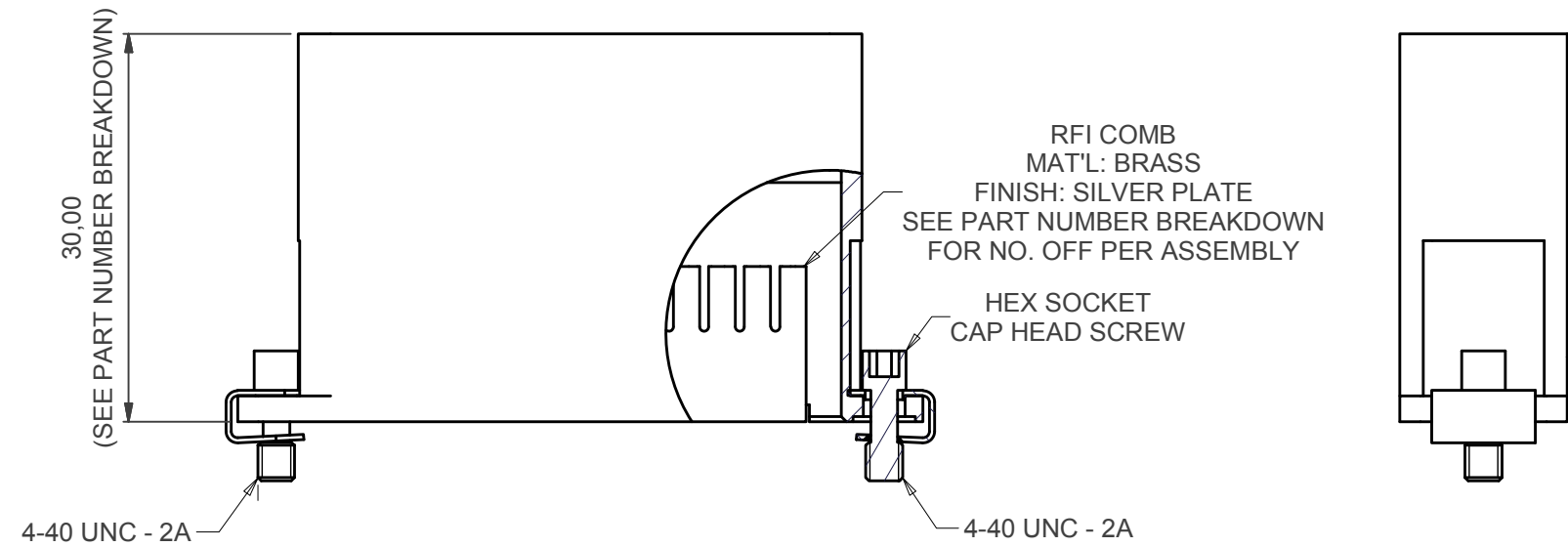
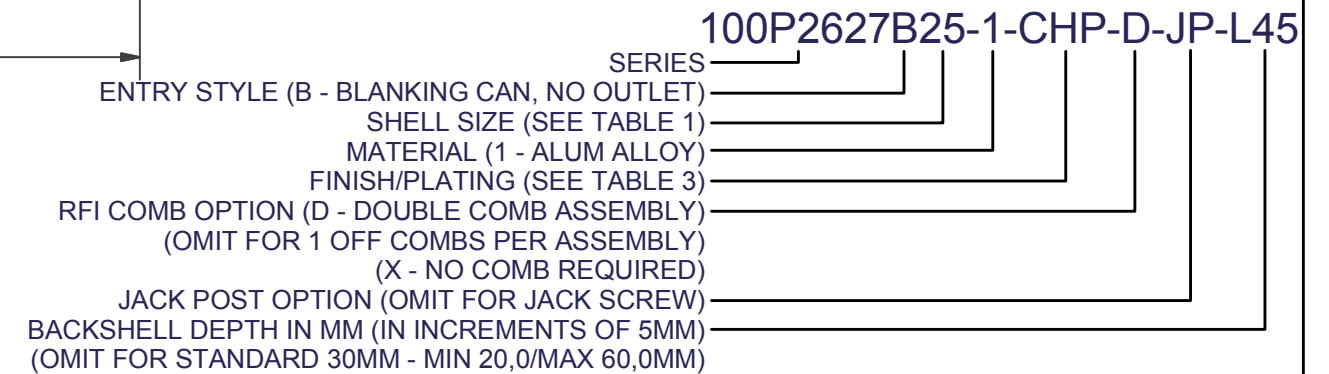
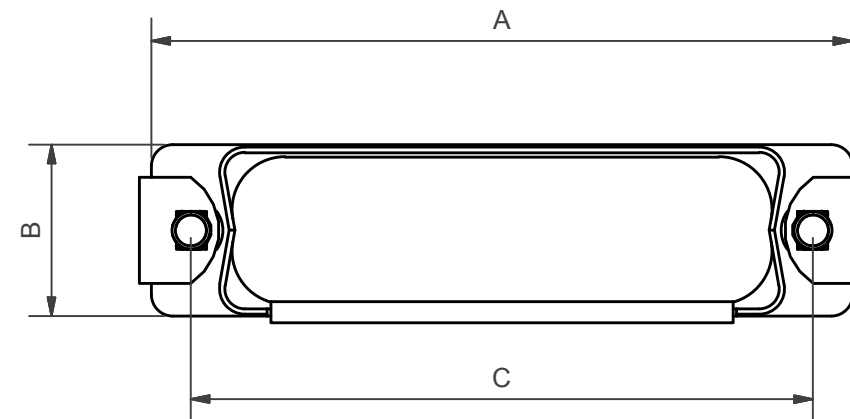


TABLE 3

PLATING CODE	DESCRIPTION
C	ELECTROLESS NICKEL
CHP	HI PHOSPHOR ELECTROLESS NICKEL TO BS EN ISO 4527:2003

HARDWARE TORQUE VALUE: 5.2lb.in (58,75cNm)



ISSUE	DCR NO.	DATE	APPROVED	MATERIAL	UNLESS OTHERWISE SPECIFIED ALL DIMENSIONS IN MILLIMETRES TOLERANCE ON DIMENSIONS +/-0.1MM TOLERANCE ON ANGLES +/- 1 DEGREE	DO NOT SCALE THIS DRAWING	POLAMCO LTD WESTON LOCK LOWER BRISTOL ROAD BATH BA2 1EP	PART NO
3	2728	25/03/2008	MXF	SEE ABOVE	WEIGHT	THIS DRAWING IS COPYRIGHT, AND THE PROPERTY OF POLAMCO LTD. IT MUST NOT BE COPIED, USED FOR MANUFACTURE OR OTHERWISE DISCLOSED WITHOUT PRIOR WRITTEN CONSENT OF THE COMPANY.	TITLE BLANKING CAN	100P2627B SERIES
					ASSY USED ON MIL-C-24308			
					DRAWING NO P9425			
					NCAGE CODE: U5792			

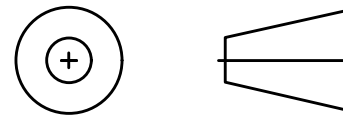


TABLE 1

SHELL SIZE	A	B MAX	C	MAX CIRCULAR ENTRY
09	31,0	13,0	24,99	06
15	39,2	13,0	33,32	06
25	53,0	13,0	47,04	06
37	69,5	13,0	63,50	06
50	66,9	16,0	61,11	08
104	69,7	17,5	63,50	08

TABLE 2

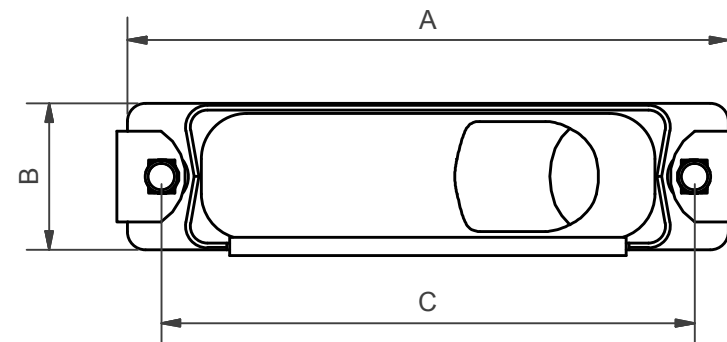
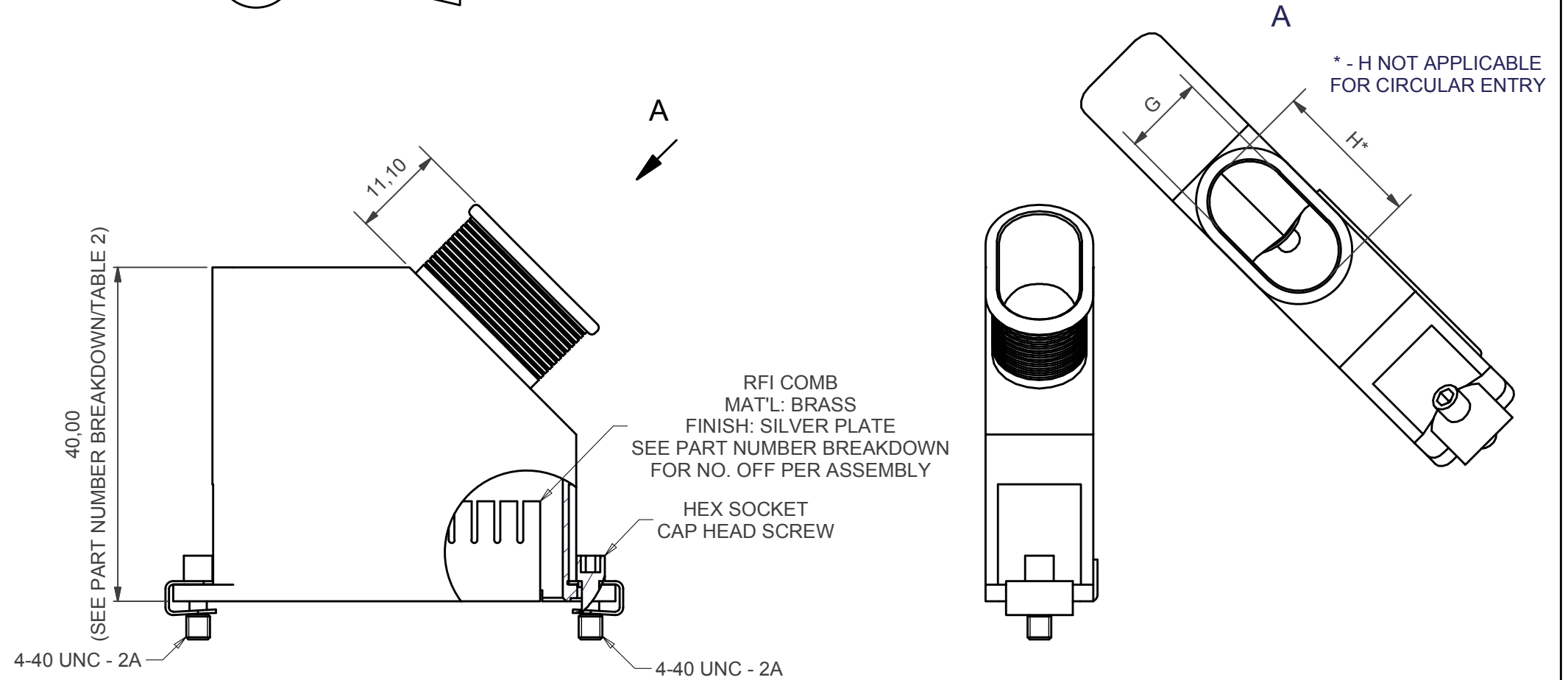
ENTRY SIZE	G DIA	G WIDTH	H	MIN HEIGHT
01	3,18	-	-	25,0
02	4,75	-	-	25,0
03	6,86	-	-	25,0
04	7,37	-	-	30,0
05	7,92	-	-	30,0
06	10,03	-	-	30,0
07	10,67	9,7*	11,8*	30,0
08	12,70	9,7*	17,9*	40,0
09	-	9,7	22,0	40,0
10	-	9,7	26,5	45,0
11	-	9,7	29,0	50,0
12	-	9,7	34,0	55,0
13	-	9,7	37,5	55,0

* - FOR SHELL SIZES 09, 15, 25 AND 37 ONLY

TABLE 3

PLATING CODE	DESCRIPTION
C	ELECTROLESS NICKEL
CHP	HI PHOSPHOR ELECTROLESS NICKEL TO BS EN ISO 4527:2003

HARDWARE TORQUE VALUE: 5.2lb.in (58,75cNm)



NOTES
SPARES:
HARWARE:
100P2627-HKIT (SCREW)
100P2627-FKIT (JACKPOST)

RFI COMB:
100P2627-**COMB;
WHERE ** DENOTES SHELL SIZE

100P2627F25-08-1-CHP-D-JP-L45

SERIES _____
45° VERSION (END OUTLET) _____
SHELL SIZE (SEE TABLE 1) _____
ENTRY SIZE (SEE TABLE 2) _____
MATERIAL (1 - ALUM ALLOY) _____
FINISH/PLATING (SEE TABLE 3) _____
RFI COMB OPTION (D - DOUBLE COMB ASSEMBLY) _____
(OMIT FOR 1 OFF COMBS PER ASSEMBLY) _____
JACK POST OPTION (OMIT FOR JACK SCREW) _____
BACKSHELL DEPTH IN MM (IN INCREMENTS OF 5MM) _____
(OMIT FOR STANDARD 30MM - MIN SEE TABLE 2/MAX 60,0MM)

ISSUE	DCR NO.	DATE	APPROVED	MATERIAL	UNLESS OTHERWISE SPECIFIED ALL DIMENSIONS IN MILLIMETRES TOLERANCE ON DIMENSIONS +/-0.1MM TOLERANCE ON ANGLES +/- 1 DEGREE	DO NOT SCALE THIS DRAWING	POLAMCO LTD WESTON LOCK LOWER BRISTOL ROAD BATH BA2 1EP	PART NO 100P2627F SERIES
3	2728	25/03/2008	MXF			THIS DRAWING IS COPYRIGHT, AND THE PROPERTY OF POLAMCO LTD. IT MUST NOT BE COPIED, USED FOR MANUFACTURE OR OTHERWISE DISCLOSED WITHOUT PRIOR WRITTEN CONSENT OF THE COMPANY.		ASSY USED ON MIL-C-24308
				NCAGE CODE: U5792	WEIGHT		TITLE D-SUB BACKSHELL ASSEMBLY WITH RFI COMB	DRAWING NO P9425
					DRAWN	DIW		