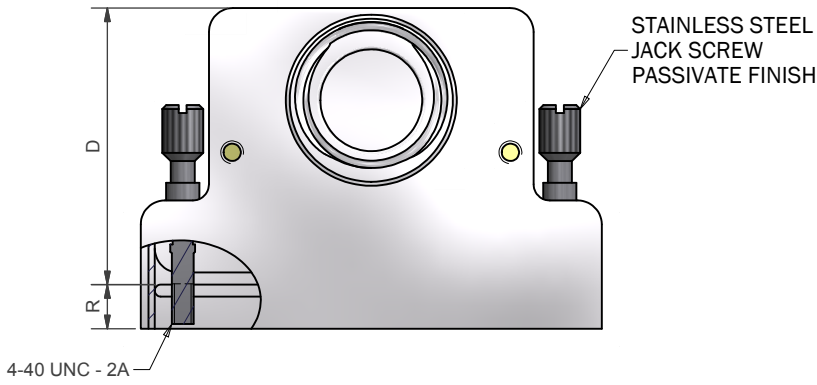
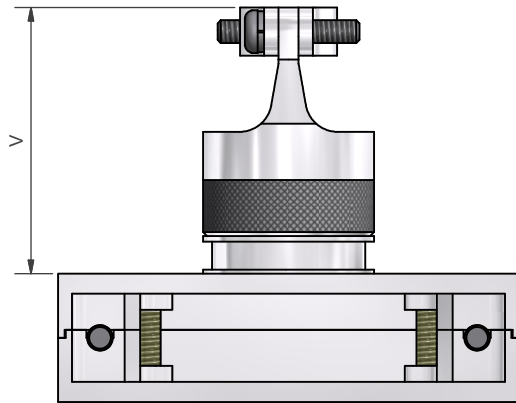
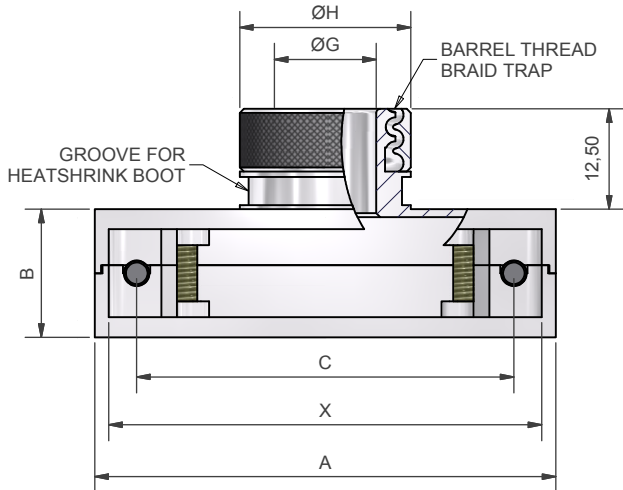
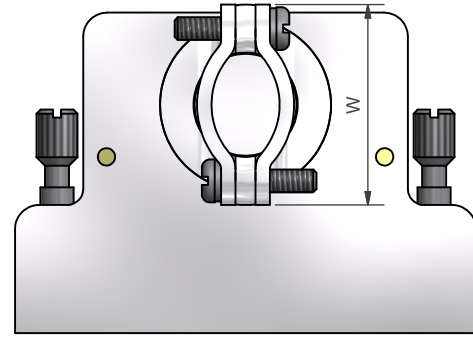


PLAIN NUT OPTION



CABLE CLAMP OPTION



SHELL SIZE	A +/-0,25	B +/-0,4	C +/-0,25	D MAX	X +/-0,2	MAX ENTRY
09	35,0	16,0	25,00	33,0	31,50	06
15	43,3	16,0	33,32	33,0	39,80	09
25	57,5	16,0	47,04	38,5	54,00	11
37	73,3	16,0	63,50	38,5	69,80	14
50	70,9	18,9	61,11	38,5	67,35	14
104	73,3	20,5	63,50	38,5	69,80	16

ENTRY SIZE	G MIN	H MAX	V +/-0,4	W MAX
03	4,7	15,2	30,2	17,3
04	6,3	15,2	30,2	18,9
05	7,9	16,8	30,2	20,5
06	9,5	18,4	30,2	22,1
07	11,1	20,0	30,2	23,6
08	12,7	21,6	33,2	25,1
09	14,2	23,2	33,2	26,8
10	15,8	24,8	33,2	28,4
11	17,4	26,4	36,2	30,1
12	19,0	27,9	36,2	31,6
13	20,6	29,5	36,2	33,1
14	22,2	31,1	39,2	34,8
15	23,8	32,7	39,2	36,5
16	25,4	34,3	39,2	37,9

CODE	PLATING
B	CADIUM OLIVE DRAB OVER ELECTROLESS NICKEL
C	ELECTROLESS NICKEL
U	UNPLATED
Y	YELLOW CHROMATE OVER CADIUM
ZB	ZINC COBALT OLIVE DRAB OVER ELECTOLESS NICKEL

MOUNTING CODE	RECEPTACLE MOUNTING POSITION	PANEL THICKNESS	R
1	FRONT MOUNT	-	7,74
2	REAR MOUNT	0,79	6,32
3	REAR MOUNT	1,57	5,53
4	REAR MOUNT	2,36	4,74
5	REAR MOUNT	3,18	3,93
6	REAR MOUNT	3,97	3,14
7	REAR MOUNT	4,77	2,34

DSS25-S-3-95-08-1-C-CC

SHELL TYPE (D-SUB, SPLIT) _____
 SHELL SIZE (TABLE 1) _____
 ANGLE (S - SIDE ENTRY) _____
 MOUNTING POSITION (TABLE 4) _____
 ENTRY STYLE (95 - BRAID TRAP TERMINATION) _____
 ENTRY SIZE (TABLE 2) _____
 MATERIAL (1 - ALUMINIUM) _____
 FINISH (TABLE 3) _____
 CABLE CLAMP OPTION (OMIT FOR PLAIN NUT) _____

DRAWN K.SHEPPARD	DATE 03/11/2011	3RD ANGLE PROJECTION NOT TO SCALE	POLAMCO LTD	WESTON LOCK LOWER BRISTOL ROAD BATH BA2 1EP	PAGE 1	UNLESS OTHERWISE SPECIFIED ALL DIMENSIONS IN MILLIMETRES
SALES APPR A.POLSON	DATE 03/11/2011					
DESIGN APPR		THIS DRAWING IS COPYRIGHTED AND THE PROPERTY OF POLAMCO LTD IT MUST NOT BE COPIED, USED FOR MANUFACTURE OR OTHERWISE DISCLOSED WITHOUT PRIOR WRITTEN CONSENT OF THE COMPANY.	ASSY USED ON: MIL-DTL-24308			MATERIAL SEE ABOVE
QUAL APPR			TITLE: SIDE ENTRY SPLIT D-SUB BACKSHELL WITH BRAID-TRAP TERMINATION			
ISSUE A	DCR		PART NUMBER: DSS-95 SERIES			NCAGE CODE U5792
WEIGHT	GENERAL TOL LINEAR +/-0.1MM ANGULAR +/-1°					DRAWING NO: P22240